

PONCHO
artsmatter 

THE **amaranthine**
EXPRESSION OF EMOTION
THE PONCHO
BIG & HUMAN
BASH EXPERIENCE
FOR THE ARTS IN PAINT
and clay **AND movement**
& THOUGHT MERGED WITH A **AND VOICE**
OF THE cognoscenti OF THE
BROUHA art & WORLD
PHILANTHROPIC



BROUHA HA IN PAINT
 HA and clay
 HA AND movement
 HA VOICE
 HA CEEDINGLY TIP TOP
 HA distinguished
SILENT B
 HA EXPRESSION
 HA EXPERIENCE
 HA HUMAN
 HA art &
 HA PHILANTHROPIC
 HA OF EMOTION



2001 Stephen Rock



Stephen Rock and the Rock Brothers produced this large-scale work by milling a Douglas Fir trunk into an 8-foot pencil. This piece is part of an ongoing body of work exploring familiar objects presented in a markedly unfamiliar scale. Rock was the recipient of a PONCHO Artistic Merit Award in 2008 and received a Morris Graves Foundation Residency in 2005. Currently a partner in Rock/DeMent visual art space in Pioneer Square, he has been exhibiting a diverse body of artwork for more than 30 years.

Black Drawing Pencil, Douglas fir, paint, 13" x 8' x 13", 2010

DONOR: Stephen Rock

Artist Contact: Stephen Rock, stephen@rockdement.com,
www.rockeditions.com.

PROCUREMENT PARTNER: ARTSWEST

VALUE: \$3,600



2002 Kurt Ralske



Part of Kurt Ralske's *Stasis Extraction* series, this video condenses the entirety of director David Lynch's *Mulholland Drive* into three

minutes of abstract image-flow. The fast-moving parts of the original film's progress are not seen; only its static elements are isolated and layered. The artist wrote his own software to create this video work.

Mulholland Drive, Stasis Extraction series, HD video on Blu-Ray DVD, 2010

DONOR: Kurt Ralske

Artist Contact: Kurt Ralske, kurt.ralske@gmail.com, retnull.com.

VALUE: \$1,000



SILENT B

Closes at
7:15 pm

2003 Erin Shafkind



Seattle-based photographer Erin Shafkind was born and raised in Los Angeles and greatly influenced by television, popular culture and modern mythology. To create what she calls 'wooden photographs,' Shafkind shoots a photograph on film, converts it to a digital duotone image in Photoshop, and then has it laser cut into a one-of-a-kind artwork.



*I Love You Galaxy Twelve,
Wood Laser cut on plywood,
10" x 10", 2009*

DONOR: Erin Shafkind

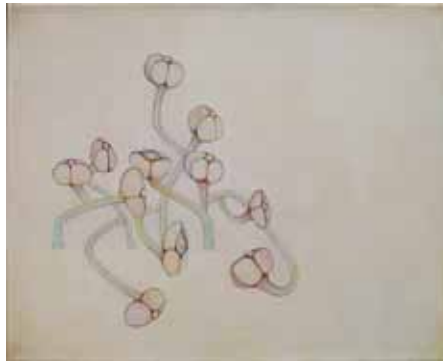
PROCUREMENT PARTNER: ARTSWEST

VALUE: \$500



2004 Robin M. Green

From her series 'provocative creatures,' Robin Green's *sedum* depicts an imaginary and provocative form, only loosely based on the plant genus with the same name. Her work explores abstractions of real or imaginary creatures in the natural world with a nod to female sexuality and fecundity. Recent exhibitions include the Seattle Art Museum's SAM



Gallery and at the Fred Hutchinson Cancer Research Center.

Green was a 2009 grant recipient from the Seattle Allied Arts

Foundation and holds graduate degrees in botany and zoology.



sedum, Acrylic on canvas, 24" x 30", 2009

DONOR: Robin M. Green

Artist Contact: Robin M. Green, robingreen.info.

VALUE: \$975

DE LA CRÈME
SILENT B
CRÈME
DE LA
CRÈME

SILENT B

Closes at
7:15 pm

2005 Jen Elek



Glass artist Jen Elek has worked as a member of Lino Tagliapietra's glassblowing team since 2001. In 2009, her work was featured in a solo show at the Traver Gallery in Tacoma. This piece was made using the encalmo technique.

Purple Banded Cylinder, Hot glass, 12" x 13" x 13", 2006, signed

DONOR: Jen Elek

Artist Contact: Jen Elek,
jenelek@comcast.net.

VALUE: \$600

2006 Junko Yamamoto



Richard Nicol



Junko Yamamoto's Shunyata Series represents ongoing memories of texture, color and space. Her works are meditative, dreamlike explorations of consciousness, colored by the contradiction of fullness and emptiness. Yamamoto has exhibited in solo and group shows at E/C Gallery in Chicago, Gallery IMA in Seattle, Frank Lloyd Wright's Westcott House in Ohio, IT! Gallery in Boise and

J-Trip Art Gallery in Tokyo, among others. Her work is in many public and private collections, including Citigroup, Harborview Medical Center and Migitoro in Tokyo.

SILENT B

Closes at
7:15 pm

*Shunyata Series - Window,
Oil on canvas, 36" x 36", 2008, signed*

DONOR: Junko Yamamoto

Artist Contact: Junko Yamamoto, EC Gallery, Chicago, IL.

VALUE: \$3,000

2007 Ann Pallesen



Seattle artist Ann Pallesen, Gallery Director of Photo Center NW, took this photograph in Paris in 2003. Not to be mistaken for lith film or lithographic prints from stones, gelatin silver lith printing is an analog printing method produced in the darkroom by heavily overexposing the negative onto a warm tone black and white paper, with multiple steps in the developing process. The result is a unique, lush print with the distinctive characteristics of hard shadows, soft highlights and warm hues, exemplified in Chandelier.



Chandelier, Gelatin silver lith print, 20" x 16", 2003

DONOR: Ann Pallesen

Artist Contact: Ann Pallesen, annpallesen@gmail.com, annpallesen.com.

PROCUREMENT PARTNER: ARTSWEST

VALUE: \$1,050

2008 Jessie Redstone

Strolling captures the image of a businessman passing a muralled city wall in Buenos Aires, Argentina. Jessie Redstone processes her digital work to mimic the prints from her old Holga film camera, with deep sepia and rich vignetting, to evoke a strong sense of place. After a successful career as co-owner of Redstone Pictures, her commercial photography company, Redstone has returned behind the camera to follow her passion for fine art photography that began at age nine in a photography class at summer camp.



Strolling Photograph, limited edition 4/24, 30" x 30", 2009

DONOR: Jessie Redstone

Artist Contact: Jessie Redstone, 206-999-8417, info@redstonepictures.com, redstonepictures.com.

VALUE: \$1,395



DE LA CRÈME
SILENT B
CRÈME
DE LA
CRÈME

SILENT B

Closes at
7:15 pm

2009 Amanda Manitch



Amanda Manitch's work explores the aesthetics of excess and references the historical imagery of hysteria and other socially transgressive psychological and medical drama. This monumental graphite drawing, *Periode de Clownisme IV* references early photography of

hysterical attacks as documented in L'Hôpital Salpetriere in 19th Century Paris.

Periode de Clownisme IV, Drawing on paper, 30" x 45", 2009

DONOR: Amanda Manitch

Artist Contact: Amanda Manitch, amandamanitch.com.

PROCUREMENT PARTNER: ARTSWEST

VALUE: \$1,500



2010 Charles Krafft



Self-taught artist Charles Krafft's work is rooted in a streetwise aesthetic evolved from the alternative cultures of California surfing and custom cars, and presents a comment on violence, power, capitalism and catastrophes. SPONE, what Krafft calls 'human bone china,' is his own invention, human bone ash porcelain clay made from human 'cremains,' a variation on the old bone china recipe from Josiah Spode, the 19th-century English porcelain master. *Tularema* is one of a set

of six slip cast hand-painted porcelain biowarfare canister grenades in the *Porcelain War Museum Project* series: Anthrax, Tularema, Bubonic Plague, Small Pox, Botulism and Ebola.

Bio Warfare Canister Grenade, Porcelain, 6" x 2.25" x 2.25", 2009

DONOR: Charles Krafft

Artist Contact: Charles Krafft, charleskrafft.com.

PROCUREMENT PARTNER: ARTSWEST

VALUE: \$675

SILENT B

Closes at
7:15 pm

2011 Alyssa Oxley



Glass artist Alyssa Oxley's kilnformed, coldworked glass pieces are inspired by wintry observations of snow and ice and images of memory. This large work, *Got the Urge for Going*, is a fine example of the medium.



Got the Urge for Going,
Kilnformed glass, coldworked, 5" x 35" x 1.5", 2008, signed

DONOR: Pilchuck Glass School

PROCUREMENT PARTNER: PILCHUCK GLASS SCHOOL

VALUE: \$2,400



2012 Judith Kindler Studio Tour and Cocktail Party for 25



Multidisciplinary artist Judith Kindler, honored as PONCHO's 2009 Artist of the Year, welcomes your group of 25 art lovers to a rare and magical experience. Tour her private studios, enjoy wine and appetizers and experience the



art she produces in her various studios: digital studio, woodworking and sculpture finishing studio, and the encaustic and painting studio.

Please arrange for a mutually agreeable date.

DONOR: Judith Kindler

PROCUREMENT PARTNER: PRATT FINE ARTS CENTER

VALUE: \$1,500

DE LA CRÈME
SILENT B
CRÈME
DE LA
CRÈME

SILENT B

Closes at
7:15 pm

2013 Seattle Opera Scene Painting Party and Picnic for Six



Armed only with your paintbrush, come tilt at windmills under the watchful eye of Seattle Opera's Master Scenic Artist Kitty Kavanaugh and scenic studios artists. Your party of six will travel to Seattle Opera's scenic studios in Renton for a two to three hour adventure as you help to create a painted backdrop for the Opera's Spring 2011 premiere production of Massenet's *Don Quixote*. Enjoy an elegant picnic provided by Gourmando Catering while you take part in the creative process. Experience the opera and view your handiwork from premium seats at the Sunday, March 6, 2011 matinee of *Don Quixote*.

Please arrange for a mutually agreeable date between November 2010 and January 2011, dependent on scenic studios schedule.

DONOR: Seattle Opera

PROCUREMENT PARTNER: SEATTLE OPERA

VALUE: \$1,000



2014 Ballpark Classics Baseball Game and Four Club Seat Tickets to Mariners



Two ways to enjoy the great American pastime. Take in a Mariner game! These four club seats in the front row of the view box section are located just above home plate. Tonight, you will take home a new game to get you through until next season begins. Ballpark Classics is a fun and competitive game of skill and strategy that draws friends and families together for a great experience that's fast, fun, and plays like real baseball. Delivering all the thrills and strategy of baseball, it's old game play that's also great to display! Pitching, hitting, strategy - it's all here, except for the smell of freshly mowed grass - we're working on that! Ballpark Classics products are authentic Major League Baseball collectibles that you'll want to proudly display when you're not playing.

Please arrange for a mutually agreeable date for the Mariners game during the 2011 regular season.

DONOR: Ballpark Classics Baseball Game MLB Edition, Villette Nolon

VALUE: \$337

SILENT B

Closes at
7:15 pm

2015 Sullivan's Steakhouse and The Paramount Hotel with Symphony for Four

Enjoy a wonderful evening downtown with friends. Your group of four will enjoy dinner at the new Sullivan's Steakhouse, which offers remarkable hospitality and the finest certified Angus beef for its hand-cut steaks, as well as select seafood, a raw bar, Washington wine and much more. Dinner will be followed by a performance at Benaroya Hall with four tickets to the Seattle Symphony. After the show, The Paramount Hotel awaits with two beautifully appointed, urban contemporary guest rooms and complimentary valet parking for two vehicles.



Please arrange for a mutually agreeable date. Valid through October 2, 2011.

DONOR: The Paramount Hotel, Sullivan's Steakhouse, Seattle Symphony

VALUE: \$1,410

2016 A Contemporary Evening at PNB

Join PNB for a special evening featuring four works by contemporary masters. The program features *Pacific* by Mark Morris, *The Piano Dance* by Paul Gibson, *Concerto DSCH* by Alexei Ratmansky, and a new world premiere by Marco Goecke. The package includes four tickets at the Dress Circle or Orchestra level for the evening of your choice. Enjoy complimentary wine and hors d'oeuvres in the private Members of the Barre lounge before the show and a special peek backstage at intermission.

Please arrange for a mutually agreeable date, at least two months in advance. This package is valid for one performance of Contemporary 4 from March 18 - 27, 2011. No transfer, refund or exchange.

DONOR: Pacific Northwest Ballet

VALUE: \$1,000



DE LA CRÈME
SILENT B
CRÈME
DE LA
CRÈME

SILENT B

Closes at
7:15 pm

2017 KEXP Behind-the-Scenes Live Music Experience for Two



Jim Bennett



The winner and a guest will receive invitations to attend eight exclusive KEXP VIP Club Concerts at the Triple Door. These private events are only available to a select group of supporters, and provide an opportunity to see some amazing artists in a very intimate setting! In addition, you are invited to the KEXP studios for a

special behind-the-scenes tour and private live broadcast performance of your choice, from their lineup of super cool bands. These performances are not typically open to the public. Tonight, take home a CD compilation, Live at KEXP Volume Six, chosen from over 500 performances in their studios.

Valid through August 31, 2011. Performances taking place off-site may not be available.

DONOR: Friends of KEXP

PROCUREMENT PARTNER: FRIENDS OF KEXP

VALUE: \$1,000



2018 Il Fornaio In-Home Cooking Class and Dinner for 10



Knock 'Em Out with Gnocchi! Il Fornaio Seattle Chef-Partner Franz Junga brings his authentic Italian cooking to your home! Roll up your sleeves, because Chef Franz will be at the ready to teach your group of 10 traditional Italian techniques and tips for making perfect gnocchi. Once prepared, all that's left to do is enjoy the fruits of your labor!

This convivial dinner comes complete with top tier Italian wine and delicious sides, just like those you enjoy at Il Fornaio. Casually fun, delicious and unforgettable.

Please arrange for a mutually agreeable date. Valid through October 2, 2011.

DONOR: Il Fornaio Cucina Italiana

VALUE: \$1,250

SILENT B

Closes at
7:15 pm

2019 Mixed Case of Italian Red Wine



The Board of Trustees of the Frye Art Museum has asked PONCHO's favorite wine guy, Dan McCarthy, to put together a great mixed case of Italian reds for the Big Bash! You can't go wrong with this case of Italian superstars. Cin cin!

- 2004 Fattoria di Petroio Chianti Classico Riserva
- 2005 Vietti Barolo 'Brunate'
- 2005 Renato Ratti Barolo 'Concha'
- 2006 Musella Amarone
- 2006 Allegrini 'La Grola'
- 2006 Felsina Chianti Classico Riserva 'Rancia'
- 2006 La Spinetta Barbaresco 'Vignet'
- 2007 Sandrone Barbera d'Alba
- 2007 Carlin de Paolo Barbera d'Asti
- 2007 Fèlsina Chianti Classico
- 2008 Abbona Dolcetto Dogliani 'Papa Celso'
- 2008 Sandrone Dolcetto d'Alba

DONOR: Frye Art Museum

PROCUREMENT PARTNER: FRYE ART MUSEUM

VALUE: \$500

2020 Seattle Food Show Tickets for Six

For years, foodies of all ages have devoured their way through Seattle's specialty chocolate, artisanal coffee, craft brews, regional wine, cheeses, fine restaurants and retailers. Come November 20 and 21, you'll find them all tempting you under one roof, right in the shadow of the Space Needle!

Just in time for holiday shopping, the new Seattle Food and Culinary Arts Show will be at Key Arena. Celebrity chef, entertainment expert and bar chef



Kathy Casey will emcee at the event's Culinarium. Enjoy advance tickets for six and individual one-year subscriptions to Bon Appetit. Cheers!

This event is date specific: Saturday, November 20 or Sunday, November 21, 2010.

DONOR: Seattle Food and Culinary Arts Show

VALUE: \$150



DE LA CRÈME
SILENT B
CRÈME
DE LA
CRÈME

SILENT B

Closes at
7:15 pm

2021 Nutcracker Behind the Scenes...Backstage for Four!



Experience the joy of the holiday season in the most exclusive way by watching a Pacific Northwest Ballet performance of Seattle's beloved Stowell/Sendak Nutcracker from backstage. Four guests will witness firsthand the magical snowfall, and voyage to the land in the East from the CLOSEST VIEWPOINT in the house!

Please arrange for a mutually agreeable date prior to December 31, 2010. Not valid Opening Night or Christmas Eve.

DONOR: Pacific Northwest Ballet

PROCUREMENT PARTNER: PACIFIC NORTHWEST BALLET

VALUE: \$1,000



2022 Tom Bihn Travel Bag

Locally made by Tom Bihn Bags, this fantastic 'Tri-Star' carry-on travel bag is the ideal bag for business or weekend travel. Made from 1050 denier ballistic nylon and Japanese Dyneema/nylon ripstop, this sturdy bag includes a shoulder strap, packing cubes and a liquids bag.

DONOR: Tom Bihn Bags

VALUE: \$400



2023 Swink Style Bar – Four Certificates for Hair and Makeup

Cue the blow dryers. Fire the irons. This is Swink. It's not a hair cut. It's a blow out. Choose your 'do from a menu of beautiful styles and let the makeup artist bring out the best in you to match your mood. Sit back and relax, because in under an hour you will be out the door, looking amazing for your night out. All for yourself or to share with girlfriends, these four hair and makeup sessions will have you stylin'.

DONOR: Swink Style Bar

VALUE: \$240

SILENT B

Closes at
7:15 pm

2024 Be a Grandparent in PNB's Nutcracker



Enjoy this holiday classic on-stage as a "grandparent" in Pacific Northwest Ballet's production of *Nutcracker* at McCaw Hall. You will perform alongside the professional dancers as a supernumerary in the Party Scene. Included in this package are four Orchestra or First Tier Box tickets to your performance so friends and family can enjoy your stage debut, a poster signed by the Artistic Director and Company dancers and a PNB sweatshirt to commemorate the occasion.



Please arrange for a mutually agreeable date by October 30, 2010. Not valid on opening night, closing night, or Christmas Eve. No transfer, refund or exchange. Due to costuming restrictions, participants must be height/weight proportionate (women: 5'3" - 5'8" Men: 5'9" - 6'3"). A minimum of two rehearsals with the Company is required, and at least one costume fitting with Wardrobe prior to performance date.

DONOR: Pacific Northwest Ballet

PROCUREMENT PARTNER: PACIFIC NORTHWEST BALLET

VALUE: \$1,500

2025 Jay Steensma



Seattle artist Jay Steensma (1941-1994) explored themes such as religion, the environment, landscapes, interiors, still-lives, portraiture and representation of common life of his time. During his lifetime Steensma produced a large body of work that has only recently began to gain recognition from museums and collectors throughout the Northwest.



His work is now included in the permanent collections of the Smithsonian Institution, the Henry Art Gallery in Seattle, the Seattle Art Museum, the Portland Art Museum and the Boise Art Museum.

Truthful Urn, Pencil on paper, 10 1/4" x 7 1/4", 1977, signed

DONOR: The Pritchard Family

VALUE: \$650

DE LA CRÈME
SILENT B
CRÈME
DE LA
CRÈME

SILENT B

Closes at
7:15 pm

2026 Patrick McCormick



Patrick McCormick has taught ceramics at Western Washington University since 1969. This piece was included in *A Decade of Ceramic Art 1962-1972* exhibition and catalog at San Francisco Museum of Modern Art, 1972.

Untitled Raku, thrown and hand built, glazed, 8.5" x 5.75", 1965

DONOR: Joseph and Elaine Monsen

VALUE: \$1,500

2027 Matthew Olds



Born in 1977 in Green Bay, Wisconsin, Olds earned his BFA in Painting from the University of Washington in 2005. He has exhibited his work widely in group and solo shows in Seattle and Tacoma, including at the Jacob Lawrence Gallery, the SAM Gallery and the Ballard Fetherston Gallery. He is co-founder of HOLD Studios, a fine arts company offering services to artists in the Puget Sound region. Olds recently received a 4Culture Project grant and was named Best of Show in the Art Port Townsend/Expressions Northwest at Northwinds Art Center.

SILENT B

Closes at
7:15 pm

Thaw, Oil on canvas, 27" x 54", 2005

DONOR: Mark Levine

VALUE: \$2,000

2028 Bruce Selchov

This large-scale painting from artist Bruce Selchov from the private collection of Dick and Betty Hedreen is representative of his work in the 1960s. As a contemporary and friend of Jay Steensma, Bob Mony, and Larry Menegas, Selchov enjoyed the energy of the artistic community in the Northwest. His works are in many public and private collections and have shown at Woodside/Braseth Galleries.



Blue-Earth Transfer, Acrylic on canvas, 48 3/4" x 96 3/4", 1961, signed

DONOR: Dick and Betty Hedreen

VALUE: \$4,000



2029 Max Benjamin

Benjamin is an important contemporary artist in the northwest. In the 1950s he studied at the University of Washington under Walter Isaacs and worked as an illustrator for Boeing before pursuing a full time fine art career. In 1984 Benjamin had a mid-career retrospective at the Bellevue Art Museum, and in 1999 was awarded the Washington State Governor's Art Award. Benjamin's non-objective paintings came to prominence in the Northwest in the late 50s and early 60s and served as a counterpoint to the Northwest School's mysticism and Asian aesthetic.



CCCXXX, Oil on canvas, 24.5" x 24.5", 2002

DONOR: Mark Levine

VALUE: \$2,500



DE LA CRÈME
SILENT B
CRÈME
DE LA
CRÈME

SILENT B

Closes at
7:15 pm

2030 Britt Freda



An abstracted, deconstructed image of a dead bee lying on its back, Britt Freda's painting, *Dead Bee*, reflects her desire to dissolve the simplicity of an everyday image into spaces 'worthy of pause.'

Dead Bee, Acrylic and graphite on panel, 19.75" x 27.5", 2008

DONOR: Britt Freda

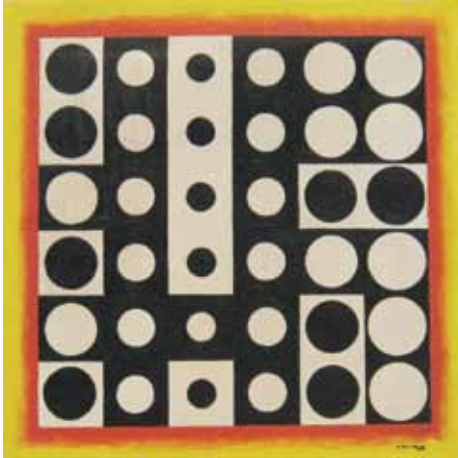
Artist Contact: brittfreda@mac.com

PROCUREMENT PARTNER: ARTSWEST

VALUE: \$2,200



2031 Spencer Moseley



A great champion of Northwest art and arts education, Spencer Moseley served on the faculty of the University of Washington School of Art for nearly 30 years and enthusiastically encouraged the development of new regional art forms. He is credited for hiring Jacob Lawrence at the University of Washington and for promoting the integration of craft into the fine arts, which was influential in the development of

the Northwest regional art movement. A student of legendary French modernist Fernand Leger, Moseley was himself an acclaimed artist. *In and Out*, from 1960, reflects his interest in formal, structural abstraction rooted in the European modernist tradition.

In and Out, Oil on canvas, 18" x 18", 1960

DONOR: Martin-Zambito Fine Art

VALUE: \$1,600

SILENT B

Closes at
7:15 pm



2032 Bocz Salon Package

Treat yourself or your beloved to a wonderful package from the luxurious Bocz Salon in Downtown Seattle. The winning bidder receives a \$500 gift certificate for a new look or for a few visits to maintain the style you already love. Tonight, take home an amazing \$500 collection of luxury hair care products from Oribe, the celebrity stylist from Miami, best-known for styling Jennifer Lopez.

Valid through October 2, 2011.

DONOR: Bocz Salon

VALUE: \$1,000

BOCZ
SALON



2033 Seattle Sounders Suite Tickets for Six

Scarves Up! Cheer on the Sounders as you take in a game at Qwest Field from the best seats in the house, a well-appointed Suite! Your party of six will be taken care of with food and beverage service in the suite during the game.

Please arrange for a mutually agreeable date during the 2011 regular season.

DONOR: Carl and Renée Behnke

VALUE: \$1,380

2034 Spa and Golf Gathering at Hotel 1000 with Dinner at BOKA for Eight

Spend a fun-filled day at beautiful Hotel 1000 in downtown Seattle! The four golfers in the group will enjoy cocktails and appetizers in the private Virtual Golf Club while playing a round of golf at Pebble Beach or at one of over 50 virtual courses around the world during their two-hour session. Four 'Spaahh' lovers will each receive a luxurious spa treatment (valued at \$125 each) with a signature cocktail before or after their service. After this fun afternoon, the whole group of eight reunites for a gourmet dinner with wine at BOKA Kitchen & Bar. This exciting in-town package includes valet parking for four cars.

Please arrange for a mutually agreeable date. Gratuities not included.

DONOR: Hotel 1000

VALUE: \$2,544

DE LA CRÈME
SILENT B
CRÈME
DE LA
CRÈME

SILENT B

Closes at
7:15 pm

2035 Galen Garwood



Egren Epopist is a collage in the vein of Garwood's most prevalent work. In recent years Garwood has been living in Asia, fighting to preserve the few remaining indigenous elephants that live there and creating an independent film dealing with the subject. Born in Georgia in 1944, Garwood studied art at the University of Georgia in Athens, the University of Alaska in Fairbanks and received his Bachelor of Arts from the University of Washington. He began showing his work in 1974 in Seattle, and has also exhibited in galleries and museums in California, Oregon, New York, Texas, Canada, Europe and Asia.

Egren Epopist, Mixed media collage, 27 1/4" x 17 1/4", 1973, signed

DONOR: The Pritchard Family

VALUE: \$2,200

2036 William Turner



Tacoma artist William Turner earned an MFA from the University of Washington where he studied with respected artist and master colorist Jacob Lawrence. His vibrant and energetic abstract paintings are a sophisticated play of color, producing canvases filled with expressive and spontaneous imagery encoded with landscape

and interior and figurative metaphors. Turner is the recipient of a Pollack/Krasner Foundation Grant and his paintings are included the Tacoma Art Museum Collection as well the Washington State Arts Commission among other prominent collections.

Come On In, the View's Fine, Oil on canvas, 47" x 54"

SILENT B

DONOR: Friend of PONCHO

Closes at
7:15 pm

VALUE: \$6,000

2037 Ellen Forney

Ellen Forney's work defies convention. A cartoonist, artist, writer, lecturer and performance artist, Forney is making her indelible mark on the Seattle art scene. In 2008, she was selected by Sound Transit to create two large-scale public murals for the entryways of the new Capitol Hill light rail station based on her acclaimed *Big F'n Hands* series. One of the murals will



use the image shown on this recycled cotton limited-edition textile print, custom-printed from a painting in this series. This package also includes her book of graphic essays, *I Love Led Zeppelin*, and a limited edition silkscreen print, entitled *Glitter Bevin*. Also known for her collaboration with Sherman Alexie on his National Book Award-winning novel, *The Absolutely True Story of a Part-Time Indian*, Forney received grants in 2010 from Seattle's Office of Arts and Cultural Affairs and Western Bridge, and created large-scale portraits for The Stranger's Genius Awards Ceremony at the Henry Art Gallery in 2007.

"Sleep with Ellen Forney" Series 1 Textile print, limited edition 2/25, 50" x 60", 2010

DONOR: Ellen Forney, Ruth True

Artist Contact: Ellen Forney, ellenforney@ellenforney.com, ellenforney.com



VALUE: \$350

2038 Edward Matlock

Edward Matlock's work is often whimsical, always original, and full of nuance. He challenges the viewer to examine themselves in the context of the work. A Northwest College of Art graduate, Matlock is a resident of Seattle's Georgetown neighborhood and one of many talented artists living in that area.

El Corazon, Acrylic on wood, 24" x 18", 2010, signed

DONOR: Edward Matlock

Artist Contact: Edward Matlock, 206-883-7224, edstro@gmail.com, edstro.com.

VALUE: \$600



DE LA CRÈME
SILENT B
CRÈME
DE LA
CRÈME

SILENT B

Closes at
7:15 pm

2039 Igor Kashinskiy



Igor Kashinskiy is a young artist well-known for figurative and graphic works. Kashinskiy was considered a young prodigy in Russia, where he began drawing at the age of five and received special training at age six. He soon won countless young artist awards and was featured in a number of publications. The first of his many exhibitions was at age nine in the highly prestigious

Russian Museum in St. Petersburg. His latest work, *Inner Space*, explores the translation of ideas about a new reality that opened for him when he began practicing meditation -- the limitlessness of inner spirituality, his unbounded freedom of expression from the physical realm to the canvas, and the expansion of his understanding of the visible world.

Inner Space, Oil on canvas, 22" x 26", 2009, signed

DONOR: Igor Kashinskiy

Artist Contact: Igor Kashinskiy, igorkashinskiy.com

Represented by: Patricia Cameron Fine Art.

VALUE: \$1,600

2040 Francis Zera



Francis Zera is an accomplished Seattle-based commercial and architectural photographer, which requires him to work in a very scripted and linear environment. With his *Metropolis* series, Zera is free from those controls and order and able to visually describe his ideas about density and disorder vs. order in the built environment. *Plasteel Frames* designed and built the stunning frame.

Metropolis No. 6, Photograph, limited edition 2/25, 40" x 32", 2009, signed

DONOR: Francis Zera, **Plasteel Frames**

Artist Contact: Francis Zera, 206-335-0200, photo@zeraphoto.com, zeraphoto.com.

VALUE: \$3,830



SILENT B

Closes at
7:15 pm

2041 Jessica Dodge

'The fox knows many things, but the hedgehog knows one great thing.'— Archilochus, Greek philosopher. Jessica Dodge created this painting as part of a small series inspired by this fragment of Greek verse. Dodge has been developing her technique of reverse painting on glass for 26 years. Conceiving her composition in reverse and layering on the color from behind the transparent viewing surface, Dodge has mastered this unique treatment, which integrates the drawing and painting techniques with the properties of the glass. Her work can be found in private collections nationally and internationally, and she has exhibited widely in the Northwest, New York, and Spain. Dodge has also designed and painted sets for INTIMAN Theatre, Empty Space, Theater Schmeater, and Honolulu Theatre for Youth, and she was the scenic charge on the U.S. location for the Lars von Trier film *Dancer in the Dark*.



Ken Wagoneer



What the Hedgehog Knows, Reverse oil painting on glass, 27" x 13" x 1", 2009

DONOR: Jessica Dodge

Artist Contact: Jessica Dodge, jessica@jessicadodge.net, www.jessicadodge.net, Jadite Gallery, New York.

VALUE: \$950

2042 Classical Ballet with Angel Corella and Dinner for Eight at Taberna del Alabardero



Begin this lovely evening with dinner for eight at the elegant Spanish restaurant Taberna del Alabardero, followed by eight VIP tickets to the UW World Series performance by Angel Corella Ballet at Meany Hall. For many years, Angel Corella was a star at the American Ballet Theatre in New York. Since then, he has founded and now manages the only classical ballet company in Spain, the Corella Ballet Castilla y León, based in an old convent school in La Granja de San Idefonso, a small town 80 miles north of Madrid. After the evening's performance, enjoy a special private reception with Angel Corella and his dancers.

This item is date-specific: May 20, 2011

DONOR: Luis F. Esteban, Taberna del Alabardero

PROCUREMENT PARTNER: U.W. WORLD SERIES

VALUE: \$2,000

DE LA CRÈME
SILENT B
CRÈME
DE LA
CRÈME

SILENT B

Closes at
7:15 pm

2043 Arthur Murray Dance Lessons

Brush up on old favorites or learn the latest steps! This gift certificate includes three private lessons for an adult or couple, two group classes, and one practice dance party. Offerings include Social, Ballroom, Latin, Night Club, Country Western, Salsa, and Swing.

Certificate is valid for a couple or individual, over 21 years of age. New students only. May not be combined with any other offers, coupons, gift certificates, specials or discounts.

DONOR: Arthur Murray School of Dance

VALUE: \$400

2044 Four Club Seats to Seahawks vs. Falcons on Dec. 19th

Head to Qwest Field on Sunday, December 19, 2010 to see the Seahawks take on the Atlanta Falcons. These great seats are located in the Club Level on the 45th yard line, so you'll stay warm and dry. Go Hawks!

Valid for the December 19, 2010 game only.

DONOR: Evelyn Zabo and Rick Schroder

VALUE: \$1,200



2045 Fendi Handbag

An instant addition to your accessory collection. Take home this brand new burgundy Fendi handbag with an elegant dark grey chain strap. The bag can be carried as a satchel or shoulder bag.

DONOR: Diana Blackmore

VALUE: \$895

SILENT B

Closes at
7:15 pm

2046 Dress Circle Tickets to *A Midsummer Night's Dream*

Witness this hilarious classic from the best seats in the house! Receive four Dress Circle tickets including entry to the private Members of the Barre donor lounge before the performance and during intermissions, where you have the opportunity of enjoying complimentary wine and light hors d'oeuvres. Enjoy a special backstage tour and take home a pair of pointe shoes autographed by a PNB dancer.

This package may be redeemed from April 9 - 17, 2011. Not valid on opening night. Date must be chosen before February 8, 2011. No transfer, refund or exchange.

DONOR: Pacific Northwest Ballet

VALUE: \$1,000

2047 Dinner for Two at Voilà! Bistrot with Wine

Begin your evening for two with a bottle of Charles Heidsieck Brut Rose Champagne Reserve, which received a stellar 94 point rating from Wine Spectator. Enjoy classic French fare at Voilà! Bistrot in Madison Valley, owned by former Figaro Bistro owner Laurent Gabrel. Tonight you will also take home a bottle of 2003 Chateau Pontet-Canet, rated 95 points by Robert Parker in *The Wine Advocate*.

DONOR: Voilà! Bistrot, Andrew Mauritzen, Naomi Ruiz and Rob Dent

VALUE: \$285



DE LA CRÈME
SILENT B
CRÈME
DE LA
CRÈME

SILENT B

Closes at
7:15 pm

2048 Sizzling Soiree at SUR with Tango Lessons on January 28, 2011



Ready to set your senses ablaze? This is a fabulous chance to gather with PONCHO friends to dine, delight and dance at SUR, the new Seattle venue that combines the best of all worlds: fine dining with flavors influenced by Latin cultures, the perfect private party space with in-house event planners, and a sizzling nightclub with impressive lighting, design, sound and worldly entertainment roster. Only 20 spaces

are available so sign up now! Guests will enjoy a delicious Latin-themed dinner with select drinks from Chef Maritza Texeira, and tango lessons with incredible professionals Patricio Touceda and Eva Lucero. Leave your inhibitions at the door; you're among friends!

\$100 per person. Friday, January 28, 2011

DONOR: SUR

VALUE: \$100 Per Person



SILENT B

Closes at
7:15 pm

VIP Guests*

Chap and Eve Alvord

Elias and Karyl Alvord

Bob and Annette Parks

Doug and Janet True

Special Guests*

Paul Birkeland and Diane Roberts

Mark Levine and John Keppeler

Table Captains*

Jeff Atkin

Leigh Canlis and Colette Courton

Citi Private Bank

Ron and Bonnie Elgin

Mark Gargett

Nancy and Rod Hochman

Key Bank

Lorna and Jim Kneeland

Steve Kutz and Courtney Womack

Mark Levine and John Keppeler

Courtney and Aaron Lilly

Louis Vuitton

The Lucurell Family

Villette Nolon

Nordstrom

Annette and Bob Parks

The Pritchard Family

Naomi Ruiz and Rob Dent

Kjell Schei

Seattle Opera

Seattle Symphony Orchestra

Stickney Research

Janet and Doug True

Wells Fargo

Evelyn Zabo



*Data as of September 8th

Special Thanks



CREATIVE DIRECTION & DESIGN

Jennifer Bartlett
Jennifer Bartlett Graphic Design



PRINTING

Olympus Press

PRODUCTION MANAGER

Kate Harrison
Facility, Inc, Event & Design
Management

PROCUREMENT MANAGEMENT

Sara Addicott
Tammie Conder

PONCHO STAFF

Lorna Kneeland
Executive Director

Carla Stadler
Finance Director

Courtney Lilly
Senior Development Director

Anastasia Kotar
Development Coordinator

PONCHO
603 Stewart Street, Suite 717
Seattle, WA 98101

206.623.6233
fax 206.682.7838

www.poncho.org

PONCHO
artsmatter

THANKS

to the Alhadeff Family for
underwriting the PONCHO

Artist of the Year Award

IN PERPETUITY

in the names of
Joan and Morrie Alhadeff





**Sheraton
Seattle**
HOTEL

The Sheraton Seattle Hotel
proudly supports the local Arts.



We welcome you to visit our
6 million dollar art collection.

1400 Sixth Avenue, Seattle, WA 98101



CITI PRIVATE BANK
IS PROUD TO
SUPPORT

The PONCHO Big Bash for the Arts

Becoming a client of Citi Private Bank grants you access to one of the most powerful financial services organizations in the world. We assist some of the world's most influential families with more than just their financial needs. We also offer a series of unique advisory services to help them think through the more human implications of wealth and better manage those things in life that matter most.

**Please contact Nancy Pellegrino, Managing Director,
Northwest Market Manager at 206.224.4323
or nancy.pellegrino@citi.com**

Citi Private Bank



"Citi Private Bank" is a business of Citigroup Inc. ("Citigroup"), which provides its clients access to a broad array of products and services available through bank and non-bank affiliates of Citigroup. Not all products and services are provided by all affiliates or are available at all locations. Citi and Citi with Arc Design are trademarks and service marks of Citigroup Inc. and its affiliates and are used and registered throughout the world.

©2010 Citigroup, Inc. All rights reserved.

Citibank, N.A., Member FDIC

• Auctioneering • Auction Planning • Cashiering • Credit Card Acceptance • Display

• Clerk Recorders • At-Auction Supervisors • KTBA Seminars • Announcers • Fund-An-Item Recording Sheets • Bid Cards •



Honored to Support PONCHO

Contact KTBA to support your benefit auction.
Serving benefit auctions from Washington, DC to Hawaii.
1218 Bigelow Avenue North / Seattle, Washington 98109
206.282.9050 / 877-937-5822 / facsimile 206.285.5795
www.kiptonerbenefitauctions.com

• Assistant Auctioneers • Computer Operators • ExpressPay™ System • Auction

• Silent Auction Bid Forms • Live Auction Invoices • Absentee Bid Forms • Printing Bid Forms • Volunteer Coordinators •



LYNN McALLISTER, PHD.
APPRAISAL SERVICES

Personal Property Appraisals for Fine Art

PRINTS

PAINTINGS

SCULPTURE

STUDIO GLASS

RESIDENTIAL CONTENTS

INSURANCE

ESTATES

PROPERTY DAMAGE

Lynn McAllister, Ph.D

Cornell University

Art History: Renaissance to Modern Period
Western and European

IRS Work in the Northwest Region

Servicing Western Washington

INTERNATIONAL SOCIETY OF APPRAISERS

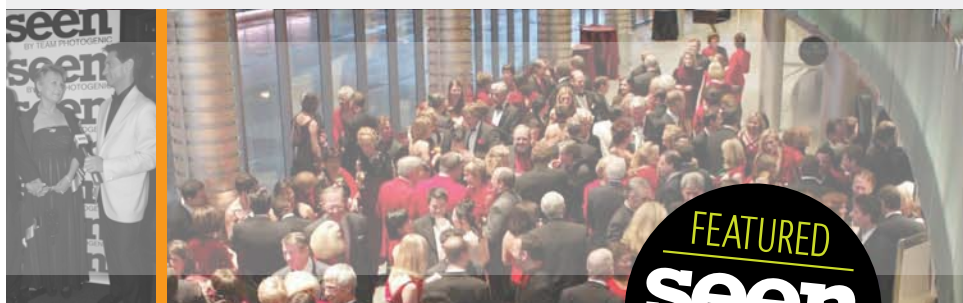
206-467-0277

www.lynnmcallister.com



bilinear.
ART CONSULTING

www.bilinearart.com | contact@bilinearart.com | 206.235.7643



Find tonight's
photos online at
teamphotogenic.com



A percentage of the proceeds of online sales will benefit *PONCHO* through the Adelia M. Fisher Fund.

Event
Wedding
Commercial
Photography

Video services now available

BOOK TODAY!

(206) 352-7858

teamphotogenic.com/quote

Art is the universal language



Sometimes the most meaningful communication happens without dialogue. Great art tells us that we are not alone with our emotions.

PONCHO, thank you for inspiring us with the shared experience of art.

wellsfargo.com

Together we'll go far



Donor Index

ACT Theatre	75	Faigin, Gary	53
Alhadeff, Kenny and Marlene	58	Fearey, Pat	38
Alvord, Chap and Eve	38, 51	The 5th Avenue Theatre	58
Arnold, Robert	38	Flexjet	50
Arthur Murray School of Dance	76, 106	Fluke, David and Dorothy	38, 59
Atkin, Jeff	38	Forney, Ellen	103
Ballpark Classics Baseball Game MLB Edition	92	Freda, Britt	100
Barrier Motors, Inc.	20	Friend of PONCHO	70, 74, 83, 102
Baxter, Kay	38	Friends of KEXP	94
Bayview Limousine Service, Inc.	80	Frye Art Museum	95
Behnke, Carl and Renée	22, 101	Gargett, Mark	38
Bellevue Philharmonic Orchestra	81	Gayton, Gary	38
Blackmore, Diana	106	Green, Robin M.	87
Bocz Salon	101	Hatch, Cathi	38
The Capital Grille	80	The Heathman Hotel	20
Champion, Mary Ann	38	Hedreen, Dick and Betty	99
Christopher of Kirkland	79	Hopkins, Craig	38
Czerska, Kinga	48	Hotel 1000	82, 101
Dale, Elisabeth	38, 84	Hughbanks, C. David	38
D’Arléans, Isa	49	Il Fornaio Cucina Italiana	94
Delicious Planet	84	Jensen, Steve	46
DeLille Cellars	18	Kashinskiy, Igor	104
Dimitriou’s Jazz Alley	80	Keppeler, John	71
Dodge, Jessica	105	Kindler, Judith	91
Donna Karan International	68	Krafft, Charles	90
Downs, Glenda	83	Leendertsen, Howard	38
Ederer, David	38	Leslie, Jim and Jeanne Tweten	78
Elek, Jen	88	Levine, Mark	38, 98, 99
Elgin, Ron	38	Lopez, Chuck	44
Esteban, Luis F.	105	Louis Vuitton	19
Evergreen City Ballet	55	Major League Baseball	60
Experiece Music Project/ Science Fiction Museum	79	Malone, Michael and Barbara	84
		Manitach, Amanda	90
		Martin-Zambito Fine Art	100

Donor Index

Matlock, Edward.....	103	Seattle Opera	39, 92
Mauritzen, Andrew	107	Seattle Shakespeare Company.....	83
Monsen, Joseph and Elaine	98	Seattle Symphony.....	47
Montoya, Eric	61	Seattle Theatre Group.....	65
Museum of Glass	62	Shafkind, Erin.....	87
Nolon, Villette	92	Skerritt, Tom and Julie Tokashiki	41
Nordstrom	43	Skibska, Anna	42
O Wines.....	18, 55	Sky River Meadery	83
On the Boards	71	The Sorrento Hotel	84
Pacific Northwest Ballet.....	40, 63, 93, 96, 97, 107	Stuart Weitzman	43
PacTrust	19	Sullivan's Steakhouse	14, 93
Pallesen, Ann	89	SUR.....	108
The Paramount Hotel	93	Swink Style Bar	96
Partners Pacific LLC	72	Taberna del Alabardero.....	105
Paul Gauguin Cruises	54	Tangerine Travel, Ltd.	56
PGA West	75	Tennis, Whiting	52
Pilchuck Glass School	72, 91	Tiffany & Co.....	56
Plasteel Frames	104	Tom Bihn Bags.....	96
The PONCHO Cellar	82	Tory Burch.....	18
Pratt Fine Arts Center.....	73	Trina Turk	69
The Pritchard Family.....	64, 69, 97, 102	True, Ruth	103
Pritchard, Becky and Andrew	68	The Vera Project	76
Pritchard, Llewelyn	38	Viking River Cruises	17
Ralske, Kurt.....	86	Voilà! Bistrot	107
Redstone, Jessie.....	89	Wild Ginger	18, 45
Ries, Barbara.....	21	Woodring, Jim.....	70
Rock, Stephen	86	Wright, Bagley.....	38
Ruiz, Naomi and Rob Dent.....	107	Wyman, David	38
Santa Mark.....	77	Yamamoto, Junko.....	88
Scott, Deborah	73	Zabo, Evelyn and Rick Schroder.....	106
Seattle Art Museum.....	45	Zera, Francis	104
Seattle Children's Theatre.....	77		
Seattle Food and Culinary Arts Show.....	95		



PONCHO
artsmatter 

603 Stewart Street, Suite 717
Seattle WA 98101
206 623 6233

www.poncho.org